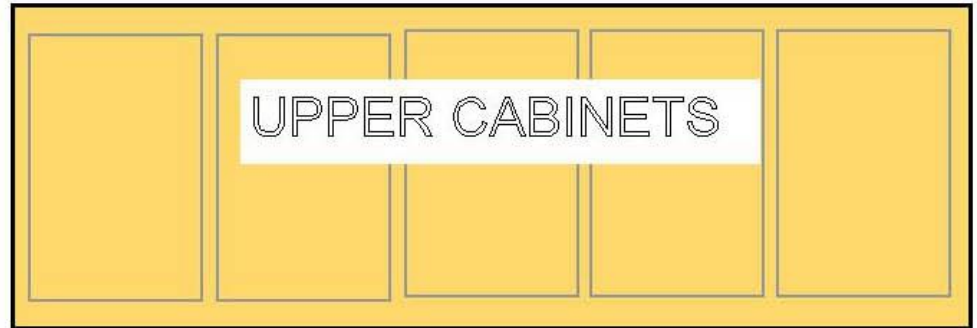




For more information contact: Al Avolicino 530-306-5101 or email to [al@ameritalia.com](mailto:al@ameritalia.com)

## SUPER AUTOMATIC ESPRESSO MACHINE INSTALLATION GUIDE

**NOTE: ESPRESSO MACHINES SHOULD BE LOCATED NEAR TO A SINK AS POSSIBLE TO ALLOW GRAVITY TYPE DRAIN TO FLOW. UNITS CANNOT BE LOCATED ABOVE DISHWASHERS IF USING GRAVITY TYPE DRAIN. SEE ILLUSTRATION BELOW**

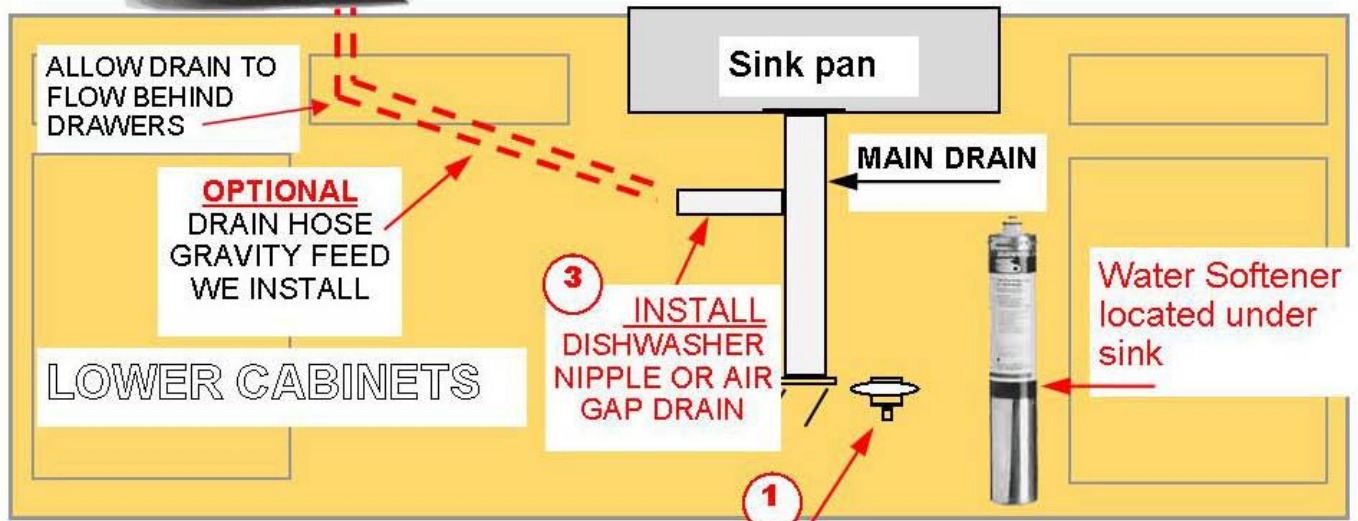


Espresso Machine cannot be located above a dishwasher if using drain hookup

Allow adequate clearance above Espresso Machine. Refer to your model for dimensions, usually 36 inches is required

**2** Locate near unit: 220 volt 30 amp 3 wire outlet, NEMA L6 30, include end cap with installation.

Unit is equipped with self contained drain pan



**PURCHASER IS RESPONSIBLE FOR:**

- 1. WATER SOURCE**
- 2. ELECTRICAL SOURCE**
- 3. DRAIN ACCOMMODATIONS**

**1** LOCATE WATER SOURCE UNDER SINK, 3/8" COMPRESSION GATE VALVE IS PREFERRED.